



Rotary Joint Operating to 6 GHz SMA Female PCB Pin Connectors

TECHNICAL DATA SHEET

PE1401

Configuration

| | |
|----------------|------------|
| Connector 1 | SMA Female |
| Impedance 1 | 50 Ohms |
| Connector 2 | PCB Pin |
| Impedance 2 | 50 Ohms |
| Adapter Design | Standard |
| Body Style | Straight |
| Mount Method | Thru Hole |

Electrical Specifications (Values at 25°C, sea level)

| Description | Minimum | Typical | Maximum | Units |
|-----------------|---------|---------|---------|--------|
| Frequency Range | DC | | 6 | GHz |
| VSWR | | | 1.15:1 | |
| Insertion Loss | | 0.3 | | dB |
| Input Power | | | 30 | Watts |
| Peak Power | | | 3 | KWatts |

Specifications by Frequency

| Description | F1 | F2 | F3 | F4 | F5 | Units |
|------------------------------------|---------|----|----|----|----|---------|
| Range | DC to 6 | | | | | GHz |
| VSWR | 1.15:1 | | | | | |
| VSWR Rotational Variance | 0.01:1 | | | | | |
| Insertion Loss Rotational Variance | 0.03 | | | | | dB |
| Phase Rotational Variance | 0.5 | | | | | Degrees |

Mechanical Specifications

| Description | Minimum | Typical | Maximum | Units |
|-------------|---------|---------|---------|-------|
| Speed | | 100 | | RPM |

Size

| | |
|--------|--------------------|
| Length | 0.87 in [22.1 mm] |
| Width | 0.35 in [8.89 mm] |
| Height | 0.35 in [8.89 mm] |
| Weight | 0.012 lbs [5.44 g] |

Click the following link (or enter part number in "SEARCH" on website) to obtain additional part information including price, inventory and certifications: [Rotary Joint Operating to 6 GHz SMA Female PCB Pin Connectors PE1401](#)



Rotary Joint Operating to 6 GHz SMA
Female PCB Pin Connectors

TECHNICAL DATA SHEET

PE1401

Connectors

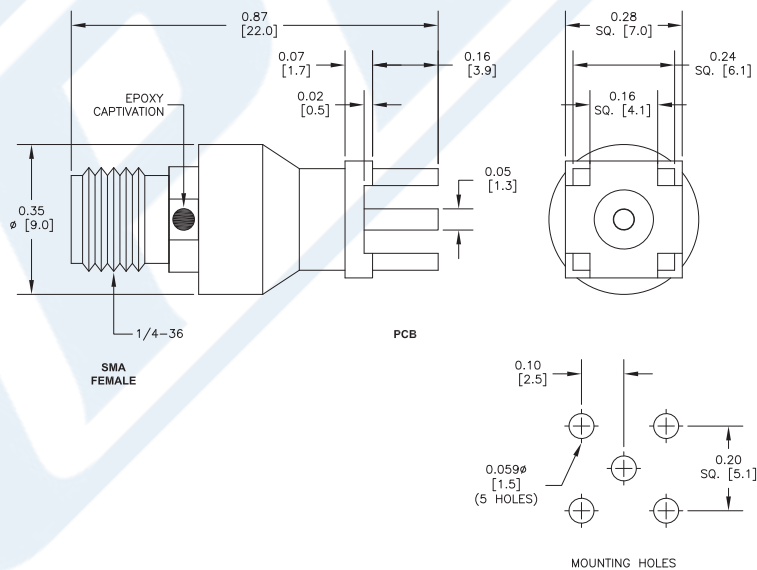
| Description | Connector 1 | Connector 2 |
|---------------------------------------|----------------------------|-------------|
| Type | SMA Female | PCB Pin |
| Inner Conductor Material and Plating | Beryllium Copper, Gold | |
| Inner Conductor Plating Specification | 4μ IN Minimum | |
| Outer Conductor Material and Plating | Passivated Stainless Steel | |
| Body Material and Plating | Passivated Stainless Steel | |
| Dielectric Type | PTFE | |

Compliance Certifications (see [product page](#) for current document)

Plotted and Other Data

Notes:

Outline Drawing



Click the following link (or enter part number in "SEARCH" on website) to obtain additional part information including price, inventory and certifications: [Rotary Joint Operating to 6 GHz SMA Female PCB Pin Connectors PE1401](#)



Rotary Joint Operating to 6 GHz SMA Female PCB Pin Connectors

TECHNICAL DATA SHEET

PE1401

Rotary Joint Operating to 6 GHz SMA Female PCB Pin Connectors from Pasternack Enterprises has same day shipment for domestic and International orders. Our RF, microwave and millimeter wave products maintain a 99.4% availability and are part of the broadest selection in the industry.

Click the following link (or enter part number in "SEARCH" on website) to obtain additional part information including price, inventory and certifications: [Rotary Joint Operating to 6 GHz SMA Female PCB Pin Connectors PE1401](#)

URL: <https://www.pasternack.com/rotary-joint-6-ghz-sma-female-pcb-pin-connectors-pe1401-p.aspx>

The information contained in this document is accurate to the best of our knowledge and representative of the part described herein. It may be necessary to make modifications to the part and/or the documentation of the part, in order to implement improvements. Pasternack reserves the right to make such changes as required. Unless otherwise stated, all specifications are nominal. Pasternack does not make any representation or warranty regarding the suitability of the part described herein for any particular purpose, and Pasternack does not assume any liability arising out of the use of any part or documentation.